

Significant Raise of Cancer

Ajith Abraham*

Department of oncology, Istanbul University, Ankara, Turkey

*Corresponding author: Ajith Abraham, Department of oncology, Istanbul University, Ankara, Turkey, E-mail: Abraham@yahoo.tk

Citation: Abraham A (2021) Significant Raise of Cancer. Arch Cancer Res Vol.9 No.S2: e005.

Copyright: © 2021 Abraham A. This is an open-access article distributed under the terms of the Creative Commons Attribution License, which permits unrestricted use, distribution, and reproduction in any medium, provided the original author and source are credited.

Introduction

During the previous twenty years, examiners have gained surprising headway in recognizing the most profound bases of the interaction—those at the sub-atomic level. These revelations are hearty: they will endure the examination of people in the future of re-searchers, and they will frame the establishment for progressive ways to deal with treatment. Nobody can foresee precisely when treatments focused to the sub-atomic modifications in malignant growth cells will discover wide use, given that the interpretation of new comprehension into clinical practice is convoluted, moderate and costly. Be that as it may, the exertion is presently under way. The expression "malignant growth" alludes to in excess of 100 types of the sickness.

Al- practically every tissue in the body can bring forth malignancies; some even yield a few sorts. Also, every malignant growth has extraordinary highlights. All things considered, the fundamental cycles that produce these assorted tumors have all the earmarks of being very comparative. Thus, I will allude in this article to "malignancy" in conventional terms, drawing on some sort to outline the standards that appear to apply generally. Disease cells, as a distinct difference, disregard this plan; they become hard of hearing to the standard controls on expansion and follow their own inward plan for re-creation. They likewise have a much more deceptive property. The capacity to move from the site where they started, attacking close by tissues and framing masses at removed destinations in the body mentioned in **Figure 1**.

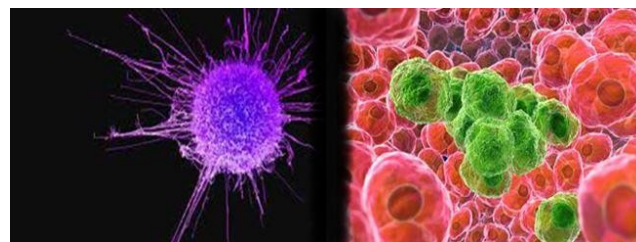


Figure 1: Raising of Cancer Cell

In any case, in the course of recent years, researchers have uncovered a bunch of essential rules that administer the advancement of malignancy. We currently realize that the cells in a tumour plunge from a typical tribal cell that at a certain point generally a very long time before a tumour gets discernible started a program of unseemly generation. Further, the harmful change of a cell happens through the amassing of transformations in explicit classes of the qualities inside it. These qualities give the way to understanding the cycles at the foundation of human disease. Analysts have additionally recognized oncogenic renditions of receptor qualities. The distorted receptors determined by these oncogenes discharge a surge of proliferative signs into the cell cytoplasm in any event, when no development factors are available to encourage the cell to recreate. However the course of the fight is evolving. The contrasts among typical and disease cells might be unpretentious, yet they are genuine. What's more, the special qualities of tumors give fantastic focuses to intercession by recently created drugs.